

CONTRACT NO. **B-21224**

BRIDGES OVER 20' SPAN

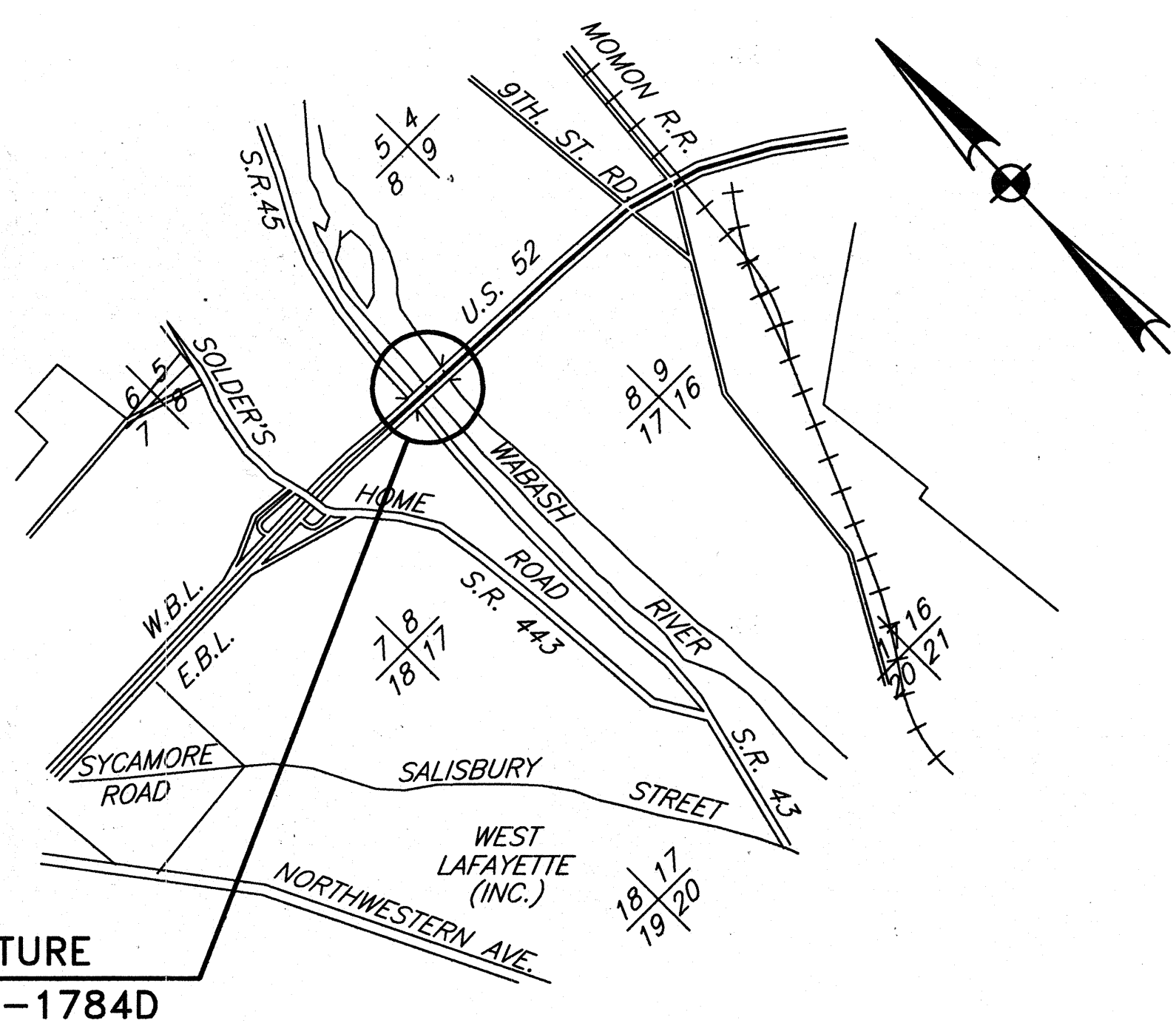
FEDERAL REGION NO.	STATE	PROJECT NO.	FISCAL YEAR	SHEET NO.	TOTAL SHEETS
5	IND.	ST-L720(N)	1999	1	11

INDEX					
PROJECT	STRUCTURE	TYPE	SPAN	OVER	STATION
ST-L720(N)	52-79-1784D (EB STRUCTURE)	STEEL TRUSS	8 SPANS 1@50'-0", 1@90'-0" 4@150'-0" & 2@90'-0" NO SKEW	WABASH RIVER & S.R. 43	
SHEET NO.	SHEET DESIGNATION	SUBJECT			F.H.W.A. APPROVAL
1		TITLE AND INDEX			
2	R1	GENERAL PLAN			
3-4	R2-R3	MISCELLANEOUS DETAILS			

INDIANA
DEPARTMENT OF
TRANSPORTATION

BRIDGE PLANS
FOR SPANS OVER 20 FEET
ON
U.S. 52 EB
PROJECT NO.: ST-L720(N)

MISCELLANEOUS REPAIRS ON STRUCTURE: 52-79-1784D ON U.S. 52 EASTBOUND OVER WABASH RIVER AND S.R. 43 LOCATED IN SECTION 8, T.23 N., R.4 W., TIPPECANOE COUNTY, INDIANA.
RP 44+88E



STRUCTURE
52-79-1784D

TIPPECANOE COUNTY
SCALE: NONE

BUTLER, FAIRMAN & SEUFERT, INC.
ENGINEERS
9405 DELEGATES ROW
INDIANAPOLIS, INDIANA 46240-3805
317-573-4615

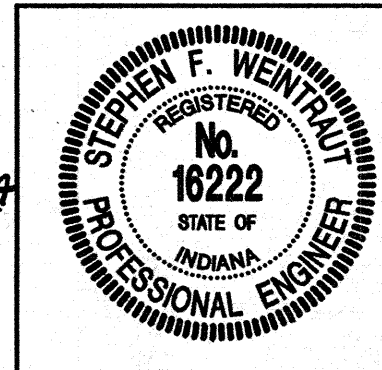
INDEX CONTINUED
STANDARD DRAWINGS

SHEET NO.	SHEET DESIGNATION	SUBJECT	F.H.W.A. APPROVAL	ADOPTED "A" REVISION "B"
	BRIDGE STD. BR-1	CONCRETE BRIDGE RAILING TRANSITION, TYPE TGB	3-9-93	A AUG., 1992
	BRIDGE STD. BR-1A	CONCRETE BRIDGE RAILING TRANSITION, TYPE TGB	3-9-93	A AUG., 1992
	BRIDGE STD. C1	MISCELLANEOUS DETAILS	1-26-93	A DEC., 1992
	BRIDGE STD. C3	MISCELLANEOUS DETAILS	1-26-93	A NOV., 1992
	BRIDGE STD. C4	MISCELLANEOUS DETAILS	12-4-74	R 10-29-74
	BRIDGE STD. D	CASTING DETAILS FOR ROADWAY DRAINS	1-11-89	R 9-1-88
	BRIDGE STD. D1	ADJUSTING FRAME DETAILS FOR ROADWAY DRAINS	7-18-83	R 6-30-82
	BRIDGE STD. PB	PRESTRESSED CONCRETE, TYPE I-BEAMS	4-16-82	A JAN., 1982
	BRIDGE STD. PB8	PRESTRESSED COMPOSITE BOX BEAMS WIDE	7-26-71	R 3-1-71
	BRIDGE STD. PB	PRESTRESSED COMPOSITE BOX BEAMS WIDE	7-26-71	R 3-1-71
	BRIDGE STD. PB	PRESTRESSED COMPOSITE BOX BEAMS WIDE	7-26-71	R 3-1-71
	BRIDGE STD. PB10	TOLERANCES FOR FABRICATION OF PRESTRESSED BEAMS	8-14-63	A NOV., 1962
	BRIDGE STD. PB11	ELASTOMERIC BEARING PAD DETAILS	2-3-87	R 2-2-87
5	BRIDGE STD. SS-1	STRUCTURAL EXPANSION JOINTS, SHEET 1	6-20-91	A APR., 1991
6	BRIDGE STD. SS-2	STRUCTURAL EXPANSION JOINTS, SHEET 2	6-20-91	A APR., 1991
	BRIDGE STD. R2B	BRIDGE LIGHTING DETAILS	5-19-88	R 4-4-88
	BRIDGE STD. S1	MISCELLANEOUS DETAILS	1-22-87	R 12-1-86
	BRIDGE STD.T SHEET A	STANDARD TEMPORARY BRIDGE	*	R 9-19-84
	BRIDGE STD.T SHEET B	STANDARD TEMPORARY BRIDGE	1-12-60	R 11-13-39
	ROAD STD. SHEET A	STANDARD PAVEMENT JOINTS	*	R 3-1-90
	ROAD STD. SHEET B	STANDARD PAVEMENT JOINTS	1-26-93	A NOV., 1992
	ROAD STD. SHEET MA	MISCELLANEOUS STANDARDS	*	R 3-1-90
	ROAD STD. SHEET MA1	MISCELLANEOUS STANDARDS	7-13-88	R 6-1-88
	ROAD STD. SHEET MA2	MISCELLANEOUS STANDARDS	6-4-84	R 4-2-84
	ROAD STD. SHEET MB	MISCELLANEOUS STANDARDS	1-26-88	R 11-2-87
	ROAD STD. SHEET MB2	MISCELLANEOUS STANDARDS	5-21-82	R 4-1-82
	ROAD STD. SHEET MB4	MISCELLANEOUS STANDARDS	6-14-74	R 1-2-74
	ROAD STD. SHEET MC	MISCELLANEOUS STANDARDS	1-11-89	R 9-1-88
	ROAD STD. SHEET MC1	MISCELLANEOUS STANDARDS	1-11-89	R 9-1-88
	ROAD STD. SHEET MD	MISCELLANEOUS STANDARDS	12-27-82	R 10-1-82
	ROAD STD. SHEET MD1	MISCELLANEOUS STANDARDS	12-27-82	R 10-1-82
	ROAD STD. SHEET MD2	MISCELLANEOUS STANDARDS	5-5-87	R 4-1-87
	ROAD STD. SHEET MD3	MISCELLANEOUS STANDARDS	12-27-82	R 10-1-82
	ROAD STD. SHEET ME	MISCELLANEOUS STANDARDS	5-19-88	R 4-4-88
	ROAD STD. SHEET ME1	MISCELLANEOUS STANDARDS	4-7-87	A MAR., 1987
	ROAD STD. SHEET ME2	MISCELLANEOUS STANDARDS	6-27-85	R 9-4-84
	ROAD STD. SHEET MH1	MISCELLANEOUS STANDARDS	6-20-91	A APR., 1991
	ROAD STD. SHEET MH2	MISCELLANEOUS STANDARDS	6-20-91	A APR., 1991
	ROAD STD. SHEET MH3	MISCELLANEOUS STANDARDS	6-20-91	R 4-1-91
	ROAD STD. SHEET MI	MISCELLANEOUS STANDARDS	6-20-91	R 4-1-91
	ROAD STD. SHEET M11	MISCELLANEOUS STANDARDS	6-20-91	A APR., 1991
	ROAD STD. SHEET M12	MISCELLANEOUS STANDARDS	5-19-88	R 4-4-88
	ROAD STD. SHEET M12A	MISCELLANEOUS STANDARDS	5-19-88	R 4-4-88
	ROAD STD. SHEET MN	MISCELLANEOUS STANDARDS	9-24-85	R 6-3-85
	ROAD STD. SHEET MP	MISCELLANEOUS STANDARDS	9-24-85	R 6-3-85
	ROAD STD. SHEET MQ	MISCELLANEOUS STANDARDS	4-10-84	R 2-1-84
	ROAD STD. SHEET MT3	TRAFFIC SIGNS	8-5-88	R 8-1-88
	ROAD STD. SHEET MT4	DELINATORS	12-1-88	R 9-1-88
	ROAD STD. SHEET MT17	MISCELLANEOUS STANDARDS	8-5-88	R 8-1-88
	ROAD STD. SHEET MT18	MISCELLANEOUS STANDARDS	1-6-88	A NOV., 1987
	ROAD STD. SHEET MT19	MISCELLANEOUS STANDARDS	1-6-88	A NOV., 1987
	ROAD STD. SHEET G-1	W-BEAM GUARD RAIL COMPONENTS	3-9-93	A AUG., 1992
	ROAD STD. SHEET G-2	THREE-BEAM GUARD RAIL COMPONENTS	7-20-92	A DEC., 1991
	ROAD STD. SHEET G-3	W-BEAM GUARD RAIL ASSEMBLIES	7-20-92	A DEC., 1991
	ROAD STD. SHEET T-1	GUARD RAIL TRANSITION TYPE TGB	3-9-93	A AUG., 1992
	ROAD STD. SHEET T-2	GUARD RAIL TRANSITION TYPE GP	3-9-93	A AUG., 1992
	ROAD STD. SHEET T-3	GUARD RAIL TRANSITION TYPE VH	3-9-93	A AUG., 1992
	ROAD STD. SHEET T-4	PIER CONNECTION DETAILS	7-20-92	A DEC., 1991
	ROAD STD. SHEET E-1	GUARD RAIL END TREATMENT TYPE I	7-20-92	A DEC., 1991
	ROAD STD. SHEET E-2	GUARD RAIL END TREATMENT TYPE OS	7-20-92	A DEC., 1991
	ROAD STD. SHEET E-3	GUARD RAIL END TREATMENT TYPE MS	7-20-92	A DEC., 1991
	ROAD STD. SHEET E-4	CURVED W-BEAM GUARD RAIL SYSTEM	3-9-93	A AUG., 1992
	ROAD STD. SHEET E-4A	CURVED W-BEAM GUARD RAIL SYSTEM	3-9-93	A AUG., 1992
	ROAD STD. SHEET E-4B	CURVED W-BEAM GUARD RAIL SYSTEM	3-9-93	A AUG., 1992
	ROAD STD. SHEET B-1	BRIDGE APPROACH GUARD RAIL	3-9-93	A AUG., 1992
	ROAD STD. SHEET CB1	CONCRETE MEDIAN BARRIER	1-11-89	R 9-1-88
	ROAD STD. SHEET CB2	TEMPORARY CONCRETE BARRIER	*	A NOV., 1993
	ROAD STD. SHEET CB2A	TEMPORARY CONCRETE BARRIER	*	A NOV., 1993
7	ROAD STD. SHEET 1 DETOURS	STANDARD DETOUR SIGNS	*	A SEP., 1988
	ROAD STD. SHEET 1A DETOURS	STANDARD DETOUR SIGNS	6-20-91	R 4-1-91
	ROAD STD. SHEET 2 DETOURS	STANDARD DETOUR SIGNS	6-20-91	R 4-1-91
8	ROAD STD. SHEET 2A DETOURS	STANDARD DETOUR SIGNS	*	A SEP., 1988
9	ROAD STD. SHEET 3 DETOURS	STANDARD DETOUR SIGNS	*	R 9-1-88
10	ROAD STD. SHEET 4 DETOURS	STANDARD DETOUR SIGNS	1-11-89	R 9-1-88
11	ROAD STD. SHEET 5 DETOURS	STANDARD DETOUR SIGNS	*	R 9-1-88
	ROAD STD. SHEET 5A DETOURS	STANDARD DETOUR SIGNS	*	R 9-1-88

*F.H.W.A. APPROVAL PENDING

PLANS PREPARED BY: BUTLER, FAIRMAN and SEUFERT, INC.
9405 DELEGATES ROW
INDIANAPOLIS, INDIANA 46240

CERTIFIED BY: *Stephen F. Wentworth* Feb. 14, 1999
317 573-4615 Date



APPROVED FOR LETTING: *Philip W. Klebe*
Chief, Division of Design

FEDERAL HIGHWAY ADMINISTRATION
DEPARTMENT OF TRANSPORTATION
APPROVED: _____
DIVISION ADMINISTRATOR DATE

TRAFFIC DATA			
A.D.T. (1993)		11,200	V.P.D.
A.D.T. (PROJECTED)			V.P.D.
D.H.V. (PROJECTED)			V.P.H.
TRUCKS		D.H.V. % A.D.T. %	
POSTED SPEED		55	M.P.H.
ACCESS CONTROL			
FUNCTIONAL CLASSIFICATION		URBAN ARTERIAL	

DES. NO.: 9319511

REVISIONS	
DATE	SHEET NO.
7-5-94	ADDITIONAL NOTES SH. NO. 2,3,4

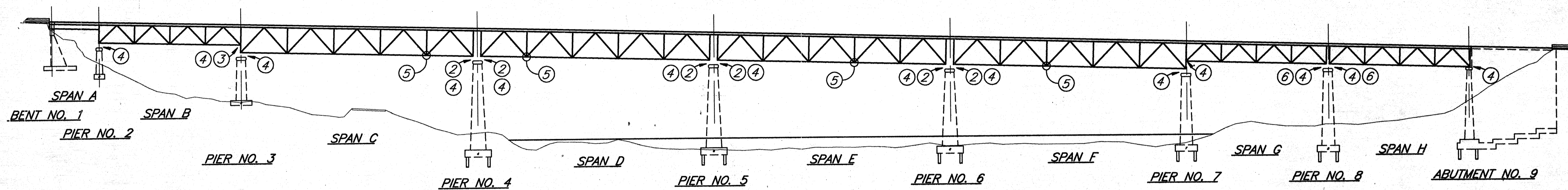
INDIANA DEPARTMENT OF TRANSPORTATION
STANDARD SPECIFICATIONS DATED 1993
TO BE USED WITH THESE PLANS.

#3094 BRIDGE FILE: 52-79-1784D (EB STRUCTURE)

B21224

02-14-94 AT 13:40 C:\CARTER\1\3094\AUTOCAD\BRIDGE\3094.DWG

STRUCTURE IS BUILT ON A -2.5% GRADE



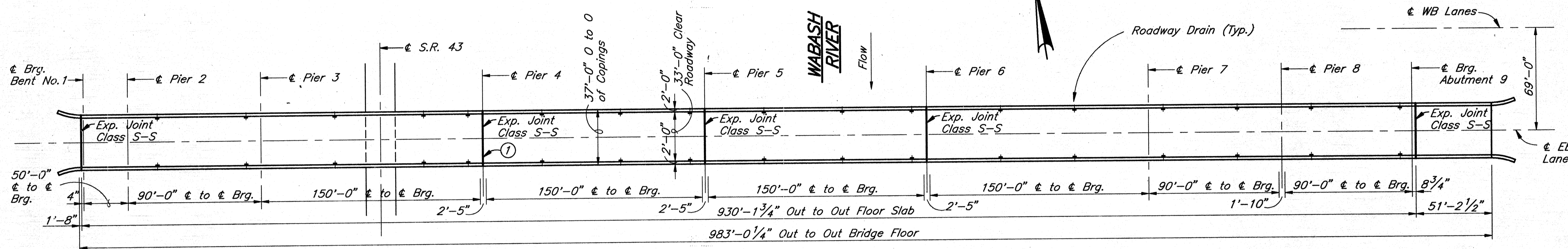
ELEVATION
Scale: 1"=40'-0"

- ① Remove Exist. Seal and Install New Seal at this S-S Expansion Joint.
 - * ② Add add'l. Gusset Plates at each face of each Truss at Lower Chord Connection. (See Drwgs. R2 & R3)
 - * ③ Add add'l. Gusset Plate at Exterior Face of North Truss Span "B" at Lower Chord Connection. (See Drwg. R2)
 - ④ Paint, Bearing Assemblies and Lower Chord Gusset Plates.
 - ⑤ Paint approx. 50% of the Lower Chord Intermediate Gusset Plates, North & South Trusses, in the 150'-0" Spans.
 - ⑥ Remove Shotcrete from under Exp. Shoes at this Pier.
- * Plates shall be added one Plate at a time. Work started in the morning which affects the Structural Capacity of the Truss shall be completed the same day. All Existing Gusset Plates and other structural members are to remain in place.

UTILITY OWNERS

TELEPHONE:
General Telephone Co. of Ind., Inc.
8001 U.S. 24 West
Post Office Box 1201
Fort Wayne, In. 46801

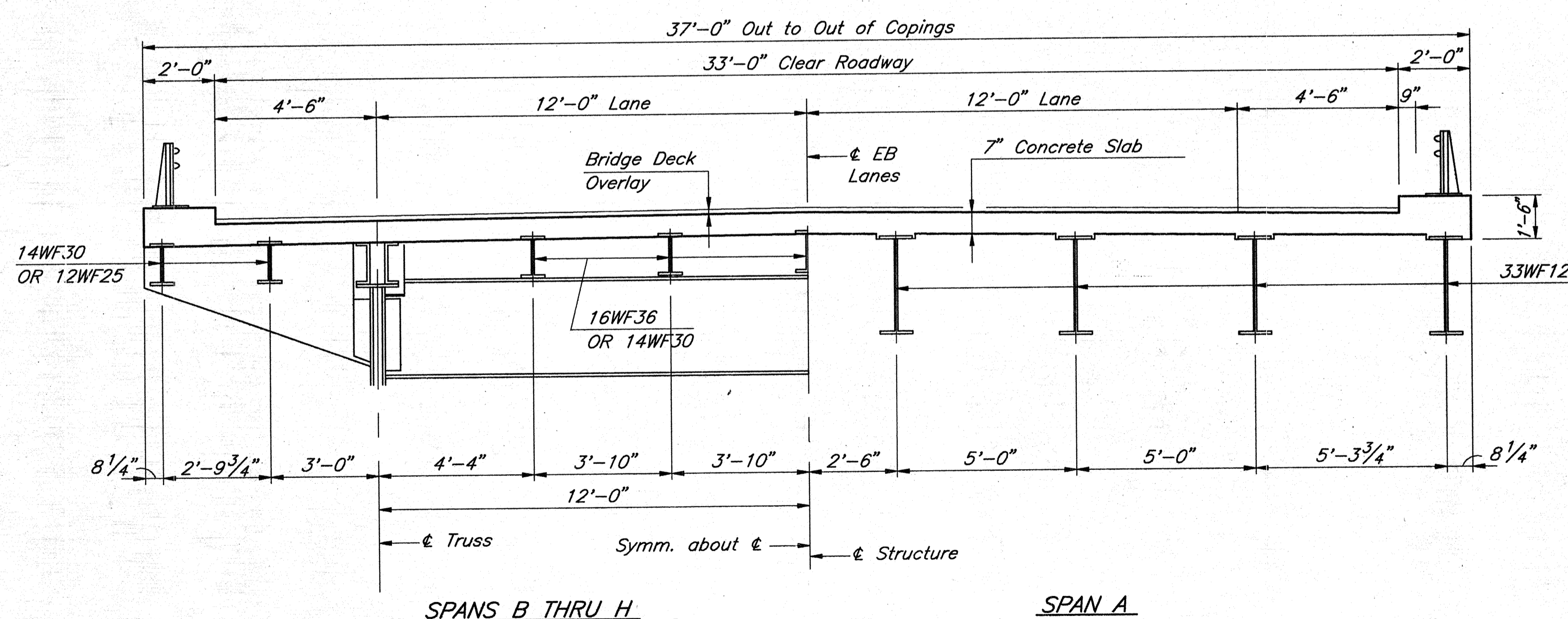
POWER:
Public Service of Indiana
100 East Main St.
Plainfield, Ind. 46168



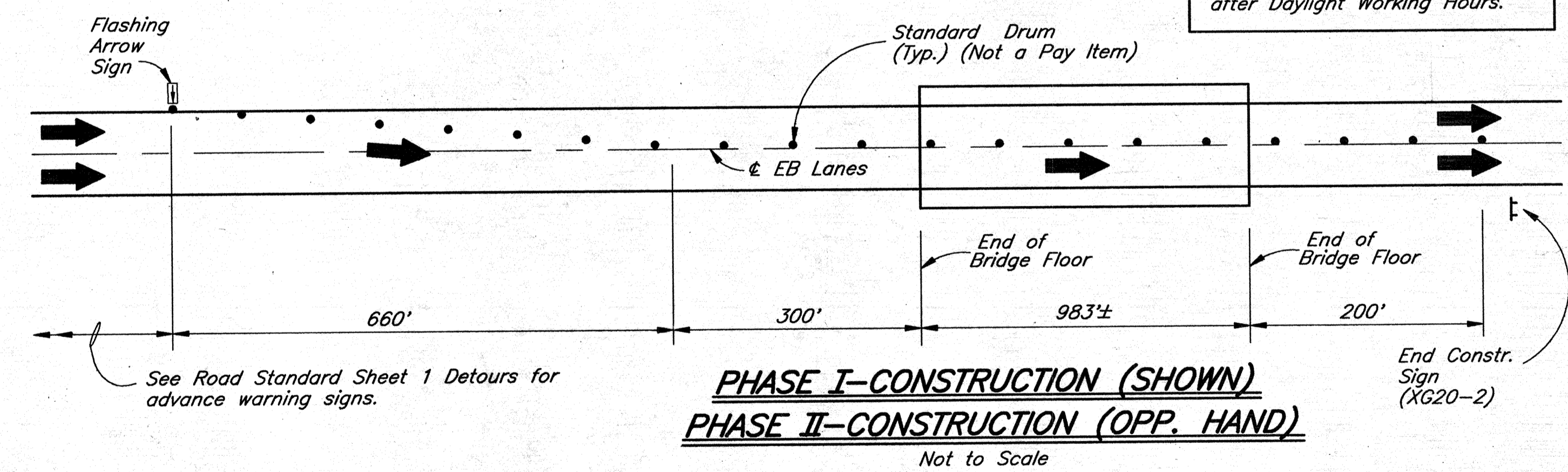
PLAN
Scale: 1"=40'-0"

NOTES
See Drawing R3 for List of Std. Drawings.

Traffic Maintenance required for Daylight Lane Closure Only. All Lanes of Traffic to be Open after Daylight Working Hours.



TYPICAL SECTION
Scale: 1/4"=1'-0"



GENERAL NOTES

Plans for Existing Structure are on file in the Bridge Department at the Indiana Department of Transportation, Central Office, as Bridge File 52-79-1784 and are available upon request.
Where new work is to be fitted to old work, the Contractor shall check all dimensions and conditions in the field and report any errors or discrepancies to the Engineer and assume responsibility for their correctness and the fit of the new part to old.
All Paint shall be in accordance with the current Indiana Department of Transportation Specifications except the color of the Vinyl Finish Coat shall be the same color as the existing paint.

CONSTRUCTION PROCEDURE

Install Traffic Control Devices as shown on this Drawing, or as directed by the Engineer.
Construct all work as shown on Detail Drawings.
One Lane of Traffic is to be maintained throughout the construction period.

PHASE I-CONSTRUCTION (SHOWN)
PHASE II-CONSTRUCTION (OPP. HAND)
Not to Scale

EXISTING STRUCTURE

GENERAL PLAN

STEEL TRUSS BRIDGE

8 SPANS: 1@50'-0", 1@90'-0", 4@150'-0" AND 2@90'-0", 33'-0" CL. RDWY.
NO SKEW ON U.S. 52 BY-PASS OVER WABASH RIVER & S.R. 43

INDIANA DEPARTMENT OF TRANSPORTATION

SCALE:- AS NOTED DATE:- FEB. 14

SUBMITTED FOR APPROVAL: *[Signature]*

DRAWING:- R1 OF 3 SHEET:- 2 OF 11
PROJECT:- ST-L720(N)
BRIDGE CONTRACT NO. B-21224
BRIDGE FILE:- 52-79-1784D (EB STRUCTURE)

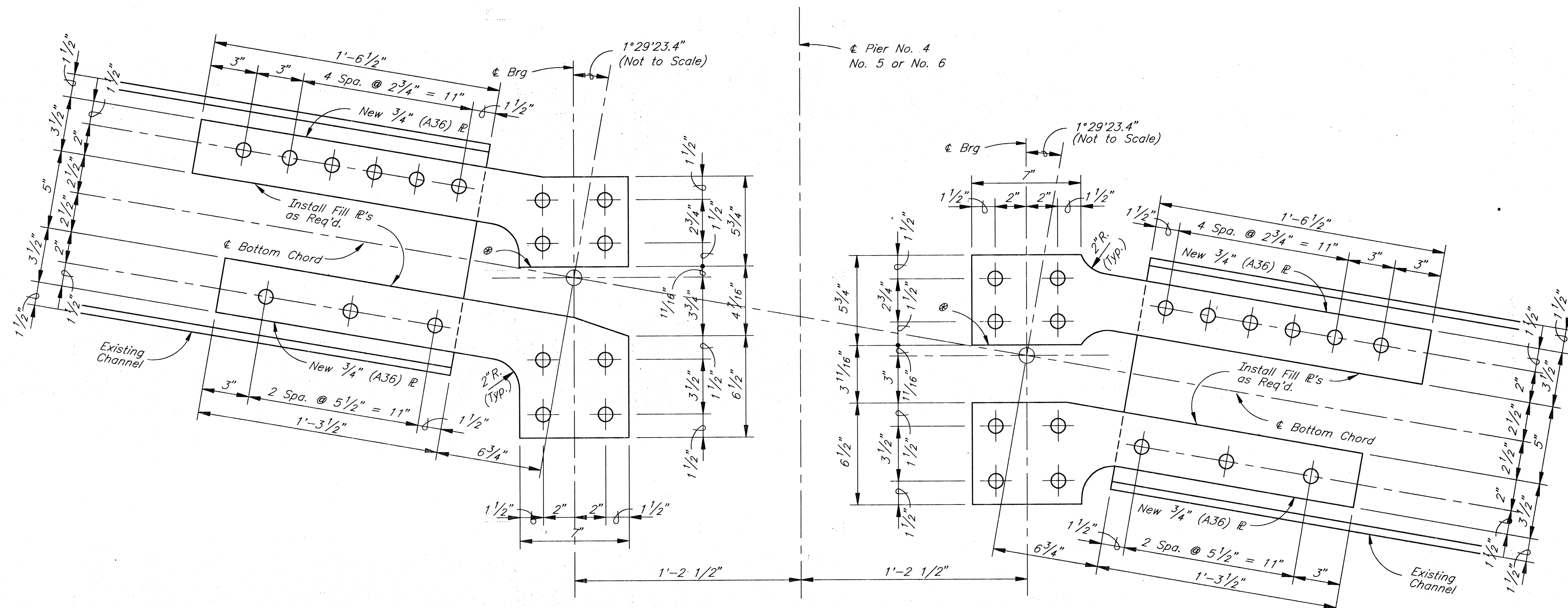
REVISED 7/5/94- ADDITIONAL NOTES

1994



02-14-94 AT 13:12 C:\CHIEF\480

DESIGNED: S. Weintraut
DRAWN: L. Osborne
TRACED: C.K.O.

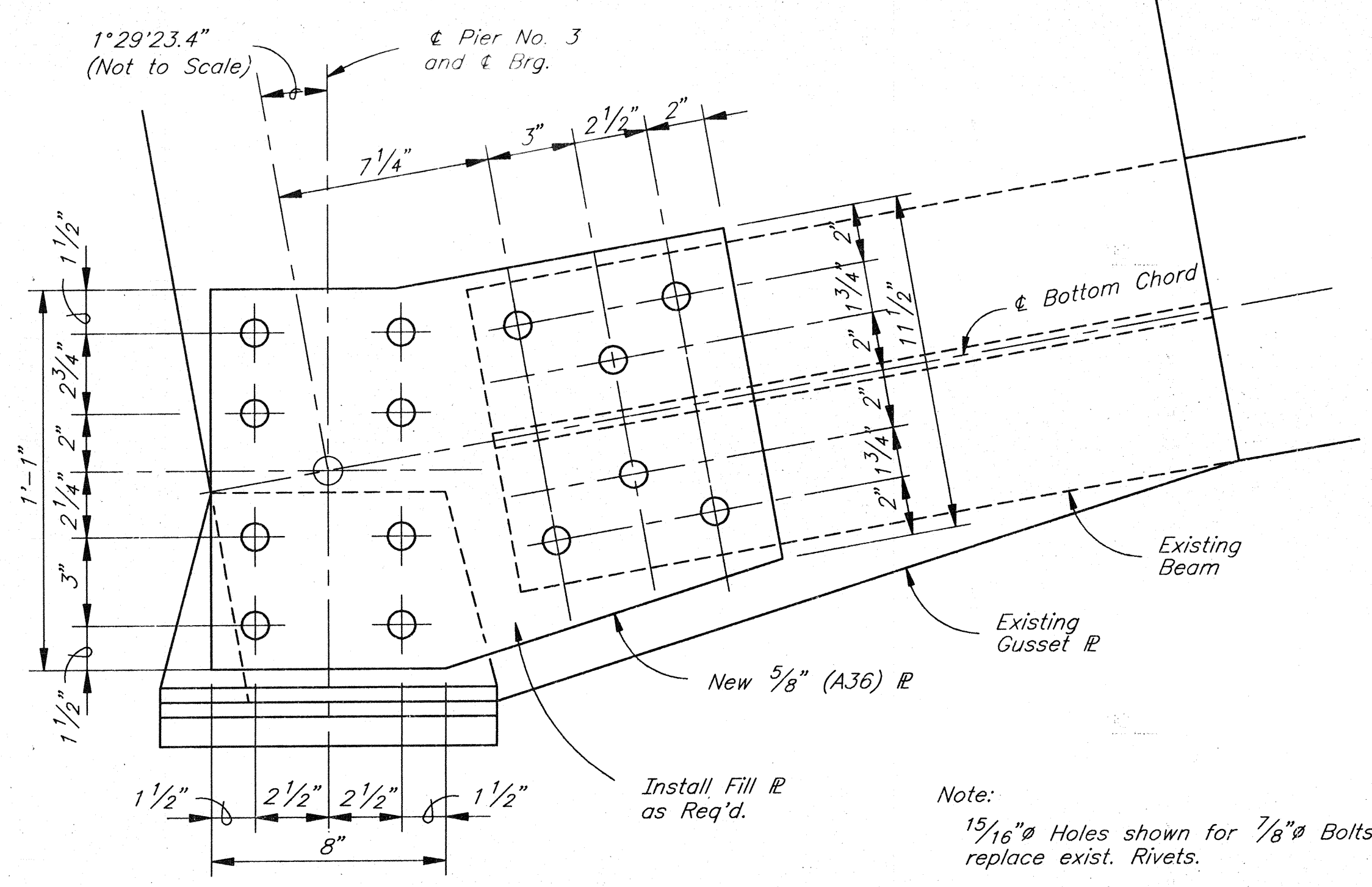


**INSIDE FACE-NORTH TRUSS OR
OUTSIDE FACE-SOUTH TRUSS
ELEVATION**
Scale: 3"=1'-0"

Grind in Field if req'd. for fit.

Note:
15/16" Holes shown for 7/8" Bolts (A490) to replace exist. Rivets.

Note:
The New Steel Plates shown above are to be added to the outside Steel Surfaces of the Existing Gusset Plates, Lower Channels or Clip Angles. Filler Plates shall be installed as req'd. to provide smooth, continuous, contact surface between the New and Existing Steel Surfaces.
See Special Provisions for Information regarding non-destructive testing of suspected cracks, defects, in the end gusset plates.



**OUTSIDE FACE-NORTH TRUSS
ELEVATION**
Scale: 3"=1'-0"

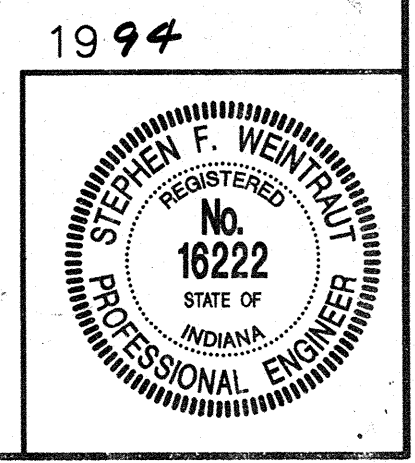
Note:
15/16" Holes shown for 7/8" Bolts (A490) to replace exist. Rivets.

MISCELLANEOUS DETAILS
INDIANA DEPARTMENT OF TRANSPORTATION
TIPPECANOE COUNTY

SCALE:- AS NOTED DATE:- FEB. 14

SUBMITTED FOR APPROVAL: *Stephen F. Weinstock*

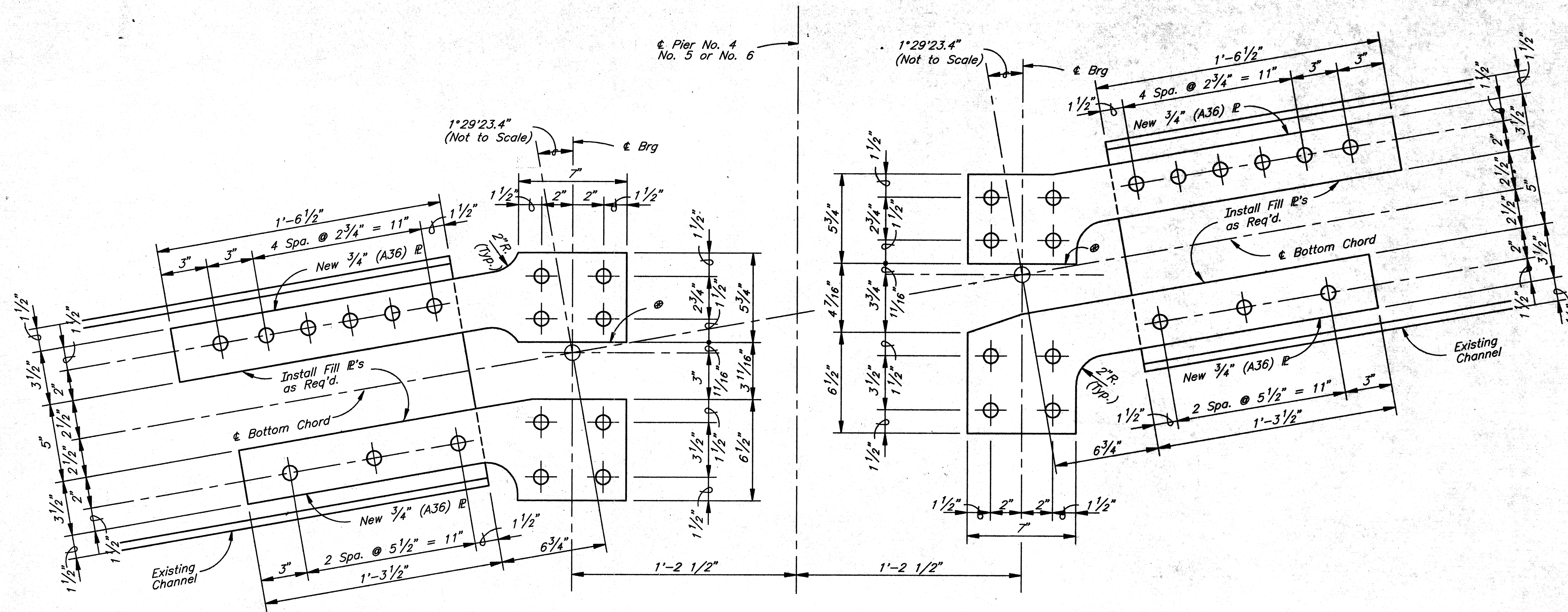
DRAWING:- R2 OF 3 SHEET:- 3 OF 11
PROJECT:- ST-L720(N)
BRIDGE CONTRACT NO. B-21224
BRIDGE FILE:- 52-79-1784D (EB STRUCTURE)



#3094

REVISED 7/5/94- ADDITIONAL NOTES

DESIGNED: D. Miller, C.K.D., S. Weintraut
DRAWN: M. Osborne, C.K.D., D. Miller
TRACED: C.K.D.



± Pier No. 4
No. 5 or No. 6

**INSIDE FACE—SOUTH TRUSS OR
OUTSIDE FACE—NORTH TRUSS
ELEVATION**
*Scale: 3"=1'-0"

⊙ Grind in Field if req'd. for fit.

Note:
15/16" Holes shown for 7/8" Bolts (A490) to replace exist. Rivets.

Note:
The New Steel Plates shown above are to be added to the outside Steel Surfaces of the Existing Gusset Plates, Lower Channels or Clip Angles. Filler Plates shall be installed as req'd. to provide smooth, continuous, contact surface between the New and Existing Steel Surfaces.
See Special Provisions for Information regarding non-destructive testing of suspected cracks, defects, in the end gusset plates.

BRIDGE STANDARDS	
Sheet	Subject
SS1	Expansion Joints, Class S-S
SS2	Expansion Joints, Class S-S

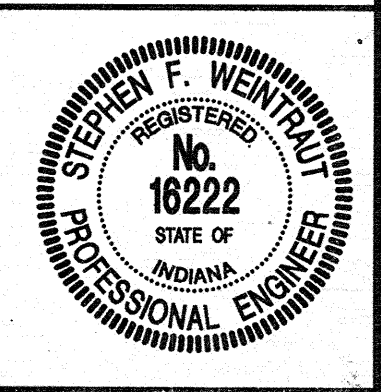
ROAD STANDARDS	
Sheet	Subject
1	Standard Detour Signs
2A	Standard Detour Signs
3	Standard Detour Signs
4	Standard Detour Signs
5	Standard Detour Signs

MISCELLANEOUS DETAILS
INDIANA DEPARTMENT OF TRANSPORTATION

TIPPECANOE COUNTY
SCALE:— AS NOTED DATE:— FEB. 14 1994

SUBMITTED FOR APPROVAL: *Stephen F. Weintraut*

DRAWING:— R3 OF 3 SHEET:— 4 OF 11
PROJECT:— ST-L720(N)
BRIDGE CONTRACT NO. B-21224
BRIDGE FILE:— 52-79-1784D (EB STRUCTURE)



#3094

REVISED 7/5/94— ADDITIONAL NOTES

DESIGNED: D. Miller, C.K.D., S. Weintraut
DRAWN: M. Osborne, C.K.D., D. Miller
TRACED: C.K.D.